



GMT MONTHLY MEMBERSHIP PROGRESS REPORT

Results as of: 5/31/2020

Multiple District 321

LOCATION: INDIA

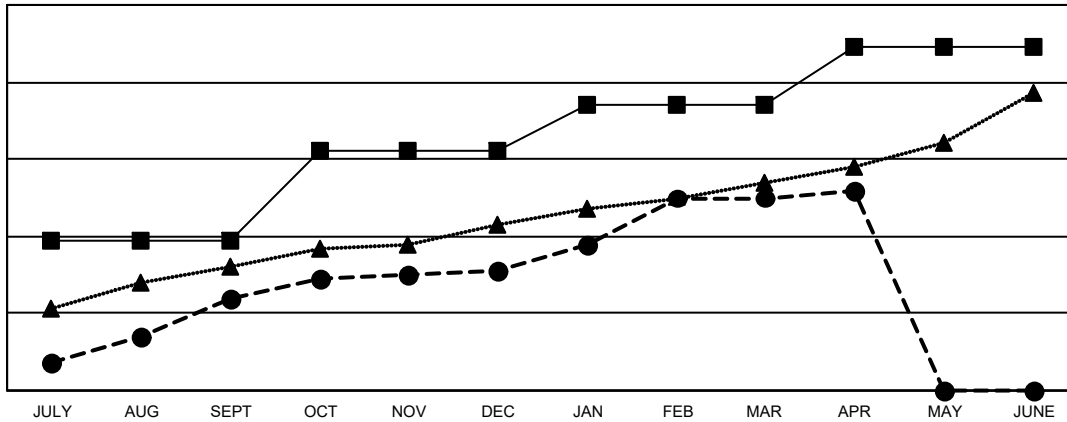
GMT: OPEN

GMT CA 6

Clubs			
RESULTS FOR 2019-2020			
QUARTER	NEW CLUB GOAL	NEW CLUBS	DROPPED CLUBS
JULY/AUG/SEPT	39	24	3
OCT/NOV/DEC	23	7	50
JAN/FEB/MAR	12	19	7
APR/MAY/JUNE	15	2	0

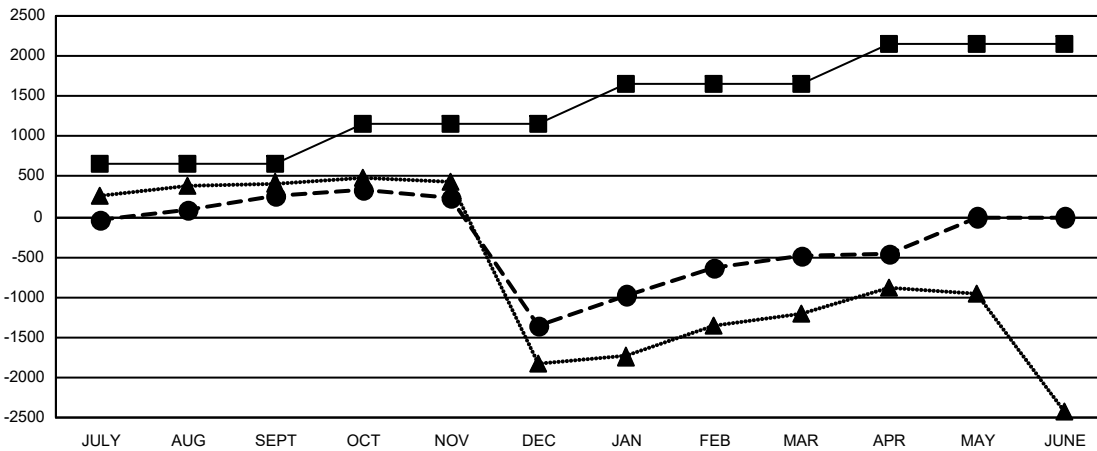
Members			
RESULTS FOR 2019-2020			
QUARTER	MEMBER GROWTH NET GOAL	MEMBER GROWTH ACTUAL	DROPPED MEMBERS ACTUAL (including transfers)
JULY/AUG/SEPT	655	1,483	1,014
OCT/NOV/DEC	495	501	2,048
JAN/FEB/MAR	510	1,753	525
APR/MAY/JUNE	490	177	93

GOALS AND ACTUAL NEW CLUBS CUMULATIVE



- - CURRENT YEAR GOALS FOR NEW CLUBS
- - CURRENT YEAR ACTUAL NEW CLUBS
- ▲ - LAST YEAR ACTUAL NEW CLUBS

GOALS AND ACTUAL MEMBERS CUMULATIVE



- - MEMBER GROWTH NET GOAL
- - MEMBER GROWTH ACTUAL
- ▲ - LAST YEAR MEMBERSHIP ACTUAL

DROPPED CLUBS: 60	479 CLUBS OF 1057 ADDED 1 OR MORE NEW MEMBERS	GENDER DISTRIBUTION
		MALE 22,291 (69.77%)
		FEMALE 9,659 (30.23%)
DROPPED MEMBERS	CLICK HERE FOR CUMULATIVE MEMBERSHIP DATA	TOTAL FAMILY UNIT MEMBERS 16,737
DECEASED 64		FAMILY MEMBERS PAYING HALF DUES 9,657
CLUB CANCELLED 1,255		
OTHER 2,360		
TOTAL 3,679		